



**A WINDSHIELD SURVEY:  
PREPARING FUTURE NURSES FOR  
PRACTICE IN DIVERSE POPULATIONS**

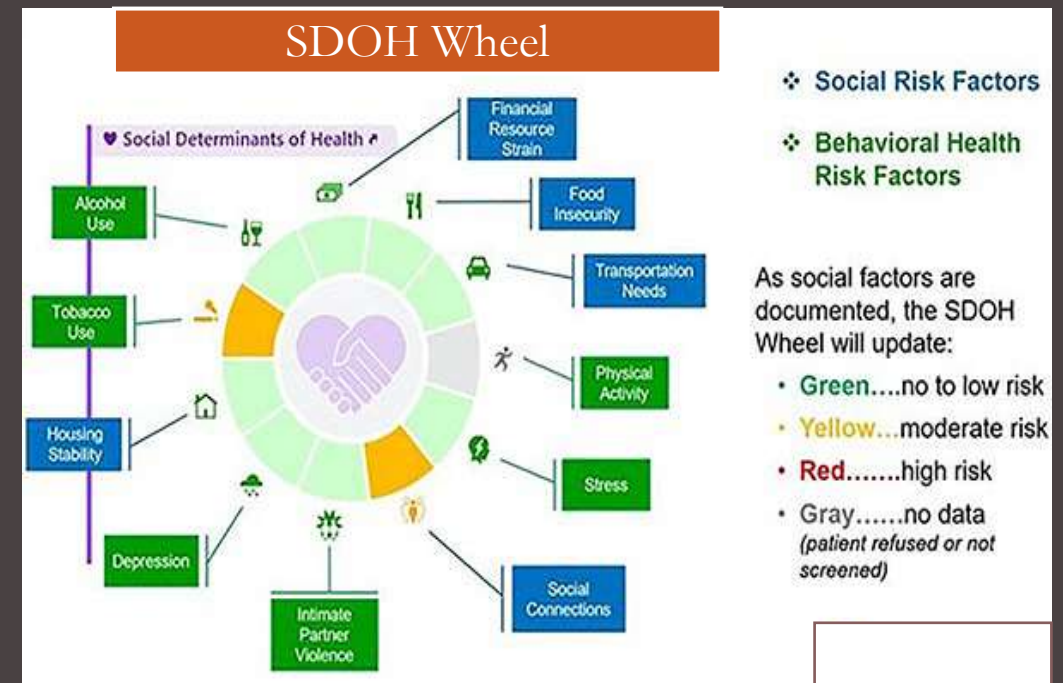
*JOHNNA RIDDICK, MSN, RN-CPN  
STEPHANIE TULLOS, MSN, RNC-MNN*

# OBJECTIVES:

- **Health Disparity/ Health Related Social Needs**
  - **Bridging the Academic Practice Gap**
- **What is a Windshield Survey?**
- **Project Review**
- **Test Your Knowledge**

# HEALTH RELATED SOCIAL NEEDS

Health-related social needs (HRSN) are an individual's unmet, adverse social conditions (e.g., housing instability, homelessness, nutrition insecurity) that contribute to poor health and are a result of underlying social determinants of health (conditions in which people are born, grow, work, and age).



# WHAT IS A WINDSHIELD SURVEY?



- ◆ An observation about a community made from a moving vehicle.
  - ◆ Useful in assessing general needs of a community on larger scale.
    - Housing
    - Road conditions
    - Street lights
    - Businesses
    - Noise level
-

# LOCATIONS

- Zip codes
  - Tri-county metro area
    - Jackson, MS
    - Brandon, MS
    - Flowood, MS
    - Ridgeland, MS
    - Pearl, MS
    - Clinton, MS
  - Large amount of diverse populations
  - What is right in front of us?



# PROJECT RUBRIC

- Housing
- Infrastructure
- Businesses/Industrial Facilities
- Public Areas
- Community Activity
- Noise
- Traffic
- Public Buildings
- Public Safety
- Water Sources
- What can be learned from this?

<i>Criteria</i>	<i>Omitted (0 points)</i>	<i>Partial ( 3 points)</i>	<i>Full ( 5 points)</i>
The information is presented within a notebook and includes group number and group names			
The information is accurate, organized, and thorough			
There is evidence that all group members participated in the project			
Community Housing – Discusses/covers the age, nature and condition of			
Infrastructure – covers the roads, bridges, street lights, and weaknesses in			
Businesses/Industrial facilities- presence or absence of functioning			
Public Spaces- discusses the location, condition, other			
Community Activity – discusses the amount of activity on the streets at various times of the day, week, or year			
Noise Levels – discusses noise volumes in various areas of the city/town			
Traffic – discusses the amount and movement of traffic at various times of day			
Public Buildings – discusses the location and condition of public buildings – the city or town hall, courthouse, etc.			
Water Sources – discusses water treatment plants, wells, lakes, streams, etc.			
Public Safety – presence of police dept, fire dept., AMR, etc.			
Lists a minimum of 4 community diagnoses			
Chooses one diagnosis to develop a plan that is thorough, specific, realistic, and measurable			
Plan Implementation - one plan of action			
Plan Evaluation – Includes how you would evaluate the plan if given enough time			
Provides pictures and other visual aids of community			
Includes any additional information unique to assigned community			
Submitted on time			
The maximum number of points for this activity is 100.			

# Community Housing

- Flowood had many places for the community to live.
- Community housing exists for both the general public and for senior populations.
- Examples of community housing seen were apartments, senior living apartments, and homes.
- The condition of the housing were good and most looked like they had been build within the last 20 years. All appeared to be well maintained.



## Infrastructure

- The main thoroughfare going down Flowood is Lakeland Dr.
- Within this zip code, both Lakeland Drive and Flowood Drive are relatively free of potholes, contain many traffic lights, and has minimal bridges.
- The infrastructure of Flowood is in working condition and is appropriate for the needs of the community.

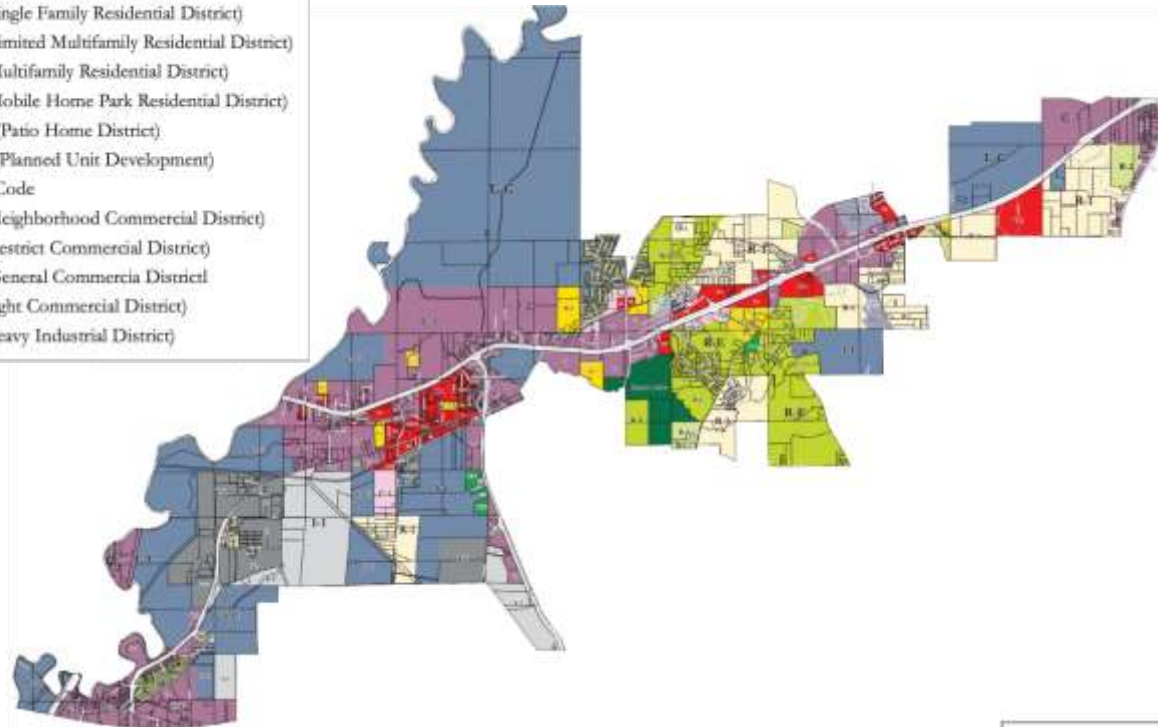




# Businesses/Industrial Facilities

- Flowood considers its city to be a pro-business community. The area has over 1,350 businesses and over 20 industrial facilities. All businesses are functioning and if a business does close, it is replaced by another.
- On the legend: light pink, red, purple and light gray are all

LEGEND	
	L-C (Land Conservation District)
	R-E (Estate Residential District)
	R-1 (Single Family Residential District)
	R-2 (Limited Multifamily Residential District)
	R-3 (Multifamily Residential District)
	R-4 (Mobile Home Park Residential District)
	PH-1 (Patio Home District)
	PUD (Planned Unit Development)
	Smart Code
	C-1 (Neighborhood Commercial District)
	C-2 (Restrict Commercial District)
	C-3 (General Commercial District)
	I-1 (Light Commercial District)
	I-2 (Heavy Industrial District)



# Public Spaces

- Flowood offers many public spaces. Most of these spaces are parks, baseball and soccer fields:
  - Liberty Park, Adams Street Park, Underwood Auditorium, Winner's Circle Park, The Nature Trail Park
- All of the public spaces are well maintained and are available year round. At most of the parks Flowood will hold special events for the community to celebrate holidays.
- Majority of the public spaces can be found off of Lakeland Drive or near Old Fannin Road.

## Community Activity

- The city holds many community activities throughout the year. Information on these events are located on the City of Flowood website.
- Some of these events include a food festival, benefit for a fallen Flowood firefighter's family, health and wellness fairs, and family festivals with several musicians, activities and food vendors
- These community activities are made possible by the 2022 event sponsors. There are over 50 sponsors which include businesses located within the city.

## Noise Levels

- The area with the highest noise level in Flowood would be the areas which surround Lakeland Drive.
- This multiple lane highway is continuously bustling.
- Lakeland Drive is surrounded with shops, stores, restaurants, drive-thrus, etc.
- It is the primary road for transportation during commuting hours as it provides direct access to the interstate, I-55.
- There are; however, less populated and less busy areas that are quiet.
- These areas are neighborhoods such as: Indian Creek, Biltmore Cove, Abundance Pointe, etc.



## Traffic

- There is traffic at **all times** of the day.
  - All of the stop lights and fourways play a huge role in this!
- Highway 25 contains many unique buildings that consist of restaurants, offices, retail stores, and much more.
- With all of the different buildings, there tends to be a high volume of people coming and going constantly from these places causing traffic congestion.

## Public Buildings

- Flowood City Municipal Court
  - Located off Airport Road
    - Holds traffic hearings, initial appearances and DWLS hearings, and trial.
  - Court is connected to city hall,
- Flowood City Hall
  - One building, connected to the Flowood City Municipal Court
  - Assists with: marriage licenses and certificates, voting, public records, etc.



## Water Sources

- The city of Flowood receives water sources from two wells which are the Sparta Sand Aquifer and the Cockfield Formation.
- The city is required to monitor drinking water on a monthly basis
- According to the 2021 Annual Drinking Water Quality Report, the city received lower to moderate susceptibility rankings to contamination.
- People who are immunocompromised should seek healthcare professional advice on drinking from public water sources.

## Public Safety

- Flowood has the presence of a many multiple first responders in the area.
- These responders consist of the Flowood Fire Station, police department, and AMR.





## 4. Community Diagnosis

1. Note the community members' complaints and concerns related to the noise level that comes from Lakeland Drive traffic.
2. Arrange a community-based program offering social, recreational, and health-related services in strategic areas of the community that accommodates all ages.
3. Seek the help of the community and possibly the state to make environmental modifications, such as cleaner drinking water to lessen the chance of sickness or infection among the community members.
4. Working with the community and healthcare professionals to inform citizens about nutrition education and counseling.

## Our Plan

- The plan that has been put in place for safer drinking water includes the following:
  - Request more trials of testing the water from the legislators of Flowood, MS.
  - Raise funds to provide filters on public water fountains and any other public drinking water source.
  - Inform the public and legislators of how important it is to raise awareness of safe drinking water.
  - Help schools and public community resources obtain bottled water that is safe to drink.

## Plan Implementation

- Objective: Improving the quality of water in Flowood
- Activities: First, we need to be meeting with legislators and community leaders to advocate for a higher quality of drinking water. It is imperative for the nurse to educate the community on dangers of drinking the water if immunocompromised.
- Outcome: A desired outcome would be for a higher grade in water quality.  
While it is acceptable now, there is still room for improvement.
- Timeline: This should be handled as soon as possible, however it should be expected to see an increasing quality of water every time a test is done.

## Plan Evaluation

- To ensure an improvement in the quality of water, yearly water inspections should be conducted.
- With this being done as soon as possible, one should be made as a baseline with allowing each test to show a lower grade with each test until we are below all aspects in the testing.
- If the grade increases rather than decreases, testing should be done every 6 months and more interventions should be done until it is lowered and we can continue to go back to every year.

# Windshield Survey (39042)



# Community Housing

- The zip code has a combination of low income and middle class homes.
- Majority of the homes are well maintained because of neighborhood sweeps. Sweeps identify common issues and alert the neighborhood that the inspectors and HOA is inspecting the area giving residents the opportunity to self inspect their property and resolve issues prior to code enforcement inspections.
- The median home value in the area is \$280,000



# Infrastructure

- Brandon has invested millions in their Infrastructure to provide a better home for the residents in 39042 zip code. This includes expansion and safety of Interstate 20, US Highway 80, and Highway 471.
- The roads in Brandon, MS are maintained and the pavement is in good condition. Street lights are maintained and working efficiently.
- Bridges are also up to date and in good condition.
- The infrastructure of Brandon is in good condition, which helps the residents thrive in their communities and provides basic services that leads to economic growth.



# Businesses and Industrial Facilities

Brandon is full of a variety of businesses, ranging from grocery stores, shops, restaurants, salons, doctor's offices and dentist offices, as well as the Pepsi Bottling company located on right off of highway 18.



El potrillo, eye doctor, endodontic associates, Bop's frozen custard



Dollar Tree, Ollie's



Kroger



Pepsi Brown Bottling company



Lost Pizza, nail salon, AT&T

# Public Spaces

- The city of Brandon has several public spaces to spend time outdoors with friends and family.
  - For example, the Brandon amphitheater is a great attraction for the community and holds a variety of concerts for entertainment.
- Also, Shiloh Park is another example of a public space for entertainment. The park has several different fields for a variety of sports, as well as tennis courts and a few playgrounds.
- Both of these public spaces are in excellent condition.



**Public playground**



**Public tennis courts**



**Brandon Amphitheater**



# Community Activity

- Downtown Brandon is mostly busy during the mornings and afternoon due to students going to or getting out of school, as well as adults going to work and coming home.
- Sunday mornings are also busy due to church services by the reservoir at Pinelake Church.
- The city of Brandon hosts community events to bring together the residents.
  - The Back to School Bash is an event to bring together parents and children time to walk around and see their friends and visit vendors
  - The Princess Ball is an event for dads and their daughters get to spend time together dancing, visiting friends, having pictures made with Miss Mississippi
  - Independence Day Celebration at the amphitheater is a great way for the community to celebrate and enjoy the summer together.



# Noise Levels

- Noise varies from small to medium levels depending on what area you live in.
- Noise levels will be higher in areas with more businesses, restaurants, and activity around.
- Whereas, noise levels in housing communities had smaller noise levels and were quiet and calm .



# Traffic

- Traffic in Brandon, MS is very busy but very contained.
- Traffic is normal and flows nicely during the week, but gets more crowded around lunch times and 4pm to 5pm, when people are getting off of work.
- Saturday morning consists of lots of cars and slow movement. This can be due to more people being on the roads and not as many people at work.



# Public Buildings

- City hall, Courthouse, Public Library
- The majority of the main public buildings in the 39042 Brandon area are in good condition. The buildings are kept clean and are very well kept from the outdoor lawn areas all the way through the inside work and public spaces.
- These public buildings are located in quiet, safe and peaceful areas to promote a good environment for the city and the citizens.



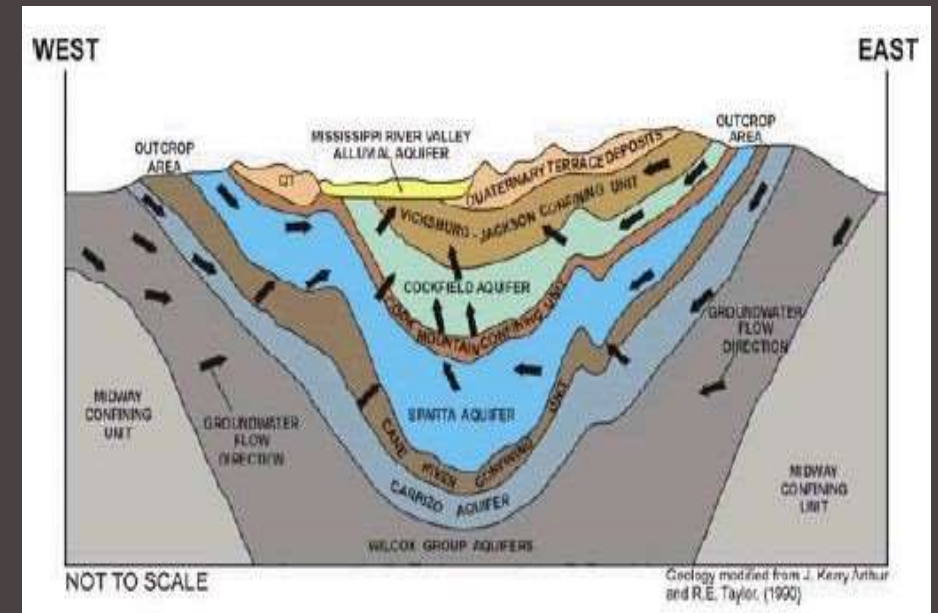
# Public Safety

- The 39042 area of Brandon has all of the main public safety buildings including multiple fire departments, police departments, EMTs and more. These facilities are in place to provide, protect and serve the local communities.
- Brandon also has a few other public safety buildings such as the Tornado Safe Room which aims at providing a safe place for locals during times of bad weather as well as a mental health facility which aims at helping and improving those in need of better mental health and more.



# Water Sources

- The Water and Sewer Division is responsible for the maintenance and repair of the water distribution mains, fire hydrants, water meters, and service lines along the collection system's sewer mains, lift stations, and grinder pumps.
- The City currently has four elevated water tanks and 10 water wells that draw from groundwater sources called the Sparta and Cockfield formation aquifers.
- The City of Brandon has 33 lift stations used to pump wastewater and transport it to the West Rankin Utility Authority to be treated.



# 4 Diagnoses:

1. Risk for physical trauma related to dangerous traffic situations as evidenced by rush hour traffic on W. Government Street and other high-traffic roadways.
2. Risk for sedentary lifestyle related to lack of public space variety as evidenced by public spaces survey.
3. Readiness for enhanced health management related to community advocacy as evidenced by numerous community engagement activities.
4. Risk for occupational injury related to a large population of the community being employed at the same facility as evidenced by the Pepsi Bottling Company on Hwy 18.

# The diagnosis chosen to develop a plan is:

- **Readiness for enhanced health management related to community advocacy as evidenced by numerous community engagement activities.**

The community's current numerous engagement activities expresses a willingness for the community to strengthen their community, specifically the community's health.

Examples of the active health engagement activities that the City of Brandon conducts include:

- Veteran's Day Breakfast
- Stormwater pollution prevention seminar - The comprehensive plan survey.

Details about all of these activities can be found on the City of Brandon, MS website.



# Plan Implementation

- One plan of action that can be done is assessing community needs and the members willingness to participate in health maintenance.
- Further assess the members readiness to engage and be apart of community health activities and management, after explaining and discussing the goal.
  - Implementation involves having accessible health information in forms of brochures, flyers, and online websites.
  - These can be distributed around the community at local stores, public buildings, community centers, and community events.

# Plan Evaluation

- The plan would be evaluated by assessing:
  - Expanded knowledge of the community members
  - Effective community engagement and thriving communities
  - Improved health and health care programs within the community
  - Life quality and well-being
- The community as a whole should be assessed, and community members should be assessed individually.

# SUMMARY

- ◆ Early exposure for students leads to higher quality care
- ◆ Awareness of health-related social issues within communities is key
  - Non-judgmental care
  - Meeting the needs
  - Bringing awareness



# REFERENCES

- ◆ Guin, N.B. (2020). Windshield and walking surveys in community health nursing. *International Journal of Science and Research*, 9(11). 523-525. Retrieved from: [https://www.isjr.net/get\\_abstract.php?paper\\_id=SR201022161001](https://www.isjr.net/get_abstract.php?paper_id=SR201022161001)
- ◆ New Requirements to Reduce Health Care Disparities. (2022). R3 Report, (36). Retrieved from [https://www.jointcommission.org/-/media/tjc/documents/standards/r3-reports/r3\\_disparities\\_july2022-6-20-2022.pdf](https://www.jointcommission.org/-/media/tjc/documents/standards/r3-reports/r3_disparities_july2022-6-20-2022.pdf)
- ◆ New Requirements to Reduce Health Care Disparities. (2022). R3 Report, (36). Retrieved from [https://www.jointcommission.org/-/media/tjc/documents/standards/r3-reports/r3\\_disparities\\_july2022-6-20-2022.pdf](https://www.jointcommission.org/-/media/tjc/documents/standards/r3-reports/r3_disparities_july2022-6-20-2022.pdf)